

# MITSUBISHI PROPULSION ENGINE RANGE

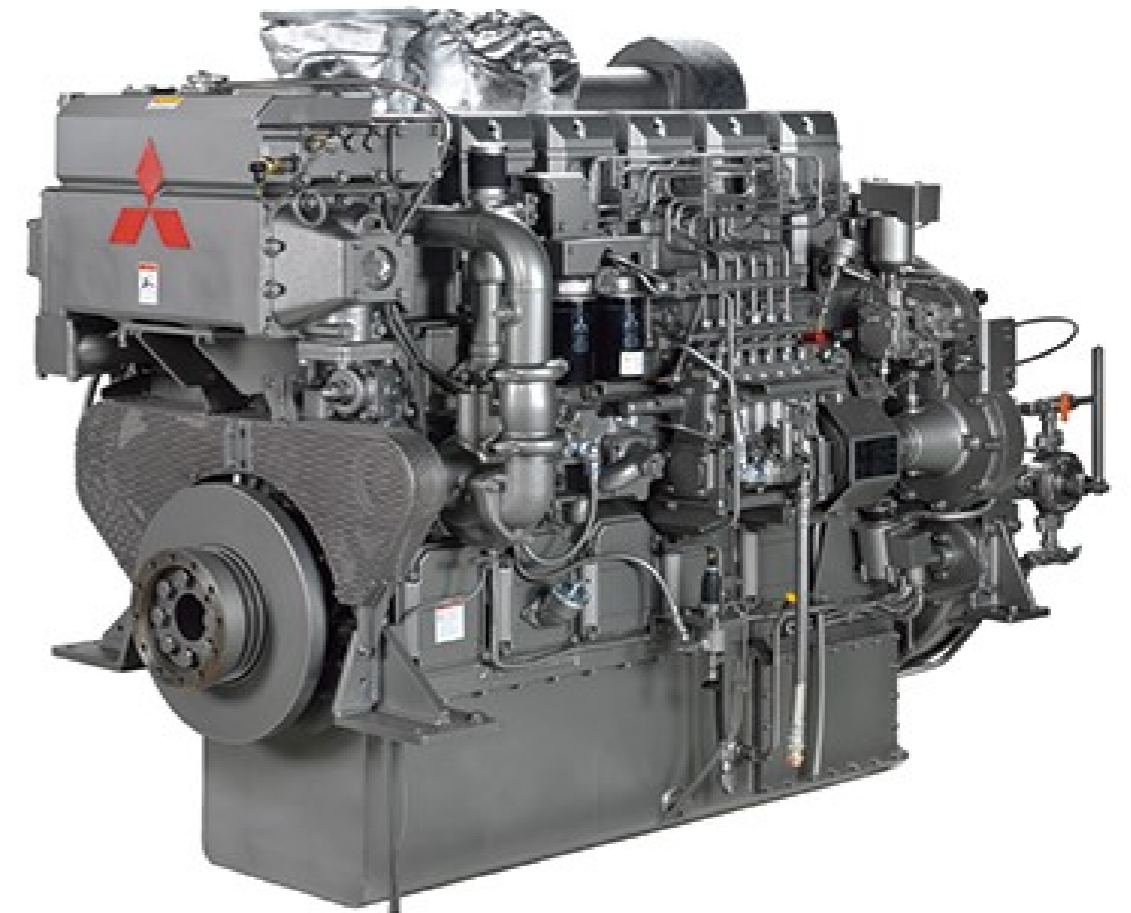
## HIGH SPEED PROPULSION ENGINES



No.	Model	Rated Output/ Speed Công suất/ Vòng quay	Displacement Thể tích	Weight Khối lượng	Annual Operating Hours Số giờ hoạt động hàng năm
1	S6M3H-T2MPTK2	351 PS/ 2330 rpm (258 kW)	7.545 L	795 KG	6000 hrs/ year
	S6M3H-T2MPTK	397 PS/ 2330 rpm (292 kW)			4000 hrs/ year
2	S6B-MTK2	280 PS/ 2100 rpm	12.88 L	1355 KG	Unlimited
		350 PS/ 2000 rpm			6000 hrs/ year
		400 PS/ 2100 rpm			4000 hrs/ year
3	S6B3-MPTK	470 PS/ 1940 rpm (345 kW)	14.60 L	1300 KG	Unlimited
		500 PS/ 2000 rpm			6000 hrs/ year
4	S6B3-T2MPTK2L	515 PS/ 2001 rpm (378 kW)	14.60 L	1665 KG	6000 hrs/ year
		610 PS/ 2001 rpm (448 kW)			4000 hrs/ year
5	S6A3-MPTK	550 PS/ 1840 rpm (405 kW)	18.56 L	1900 KG	Unlimited
		605 PS/ 1900 rpm (445 kW)			6000 hrs/ year
		666 PS/ 1960 rpm (490 kW)			4000 hrs/ year
6	S6A3-MPTK2	650 PS/ 1900 rpm (479 kW)	18.56 L	1990 KG	6000 hrs/ year
		671 PS/ 1900 rpm (494 kW)			6000 hrs/ year
		715 PS/ 1960 rpm (525 kW)			4000 hrs/ year
7	S6A3-T2MPTK3	682 PS/ 1900 rpm (502 kW)	18.56 L	2100 KG	6000 hrs/ year
		758 PS/ 1900 rpm (558 kW)			4000 hrs/ year
8	S6R-MPTK	639 PS/ 1600 rpm (470 kW)	24.51 L	2830 KG	Unlimited
		707 PS/ 1650 rpm (520 kW)			6000 hrs/ year
		822 PS/ 1800 rpm (605 kW)			4000 hrs/ year
9	S6R-T2MPTK2	829 PS/ 1637 rpm (610 kW)	24.51 L	2830 KG	6000 hrs/ year
		940 PS/ 1696 rpm (691 kW)			4000 hrs/ year
10	S6R2-MPTK	652 PS/ 1350 rpm (480 kW)	29.96 L	2960 KG	Unlimited
		720 PS/ 1400 rpm (530 kW)			6000 hrs/ year
		750 PS/ 1450 rpm			4000 hrs/ year
		829 PS/ 1500 rpm (610 kW)			4000 hrs/ year
11	S6R2-MPTK2	845 PS/ 1352 rpm (622 kW)	29.96 L	3070 KG	6000 hrs/ year
		940 PS/ 1400 rpm (691 kW)			4000 hrs/ year
12	S6R2-MTK3L	1031 PS/ 1406 rpm (759 kW)	29.96 L	3130 KG	4000 hrs/ year
13	S6R2-MTK5L	1143 PS			
14	S12A2-MPTK	953 PS/ 1940 rpm (701 kW)	33.93 L	3720 KG	Unlimited
		1055 PS/ 2000 rpm (776 kW)			6000 hrs/ year
		1166 PS/ 2100 rpm (858 kW)			4000 hrs/ year
15	S12R-MPTK	1278 PS/ 1600 rpm (940 kW)	49.03 L	5320 KG	Unlimited
		1414 PS/ 1650 rpm (1040 kW)			6000 hrs/ year
		1645 PS/ 1800 rpm (1210 kW)			4000 hrs/ year
16	S12R-T2MPTK2	1634 PS/ 1650 rpm (1202 kW)	49.03 L	5320 KG	6000 hrs/ year
		1825 PS / 1800 rpm (1342 kW)			4000 hrs/ year
17	S16R-MPTK	1699 PS/ 1600 rpm (1250 kW)	65.37 L	6780 KG	Unlimited
		1876 PS/ 1650 rpm (1380 kW)			6000 hrs/ year
		2188 PS/ 1800 rpm (1610 kW)			4000 hrs/ year
18	S16R2-T2MPTK	1971 PS/ 1350 rpm (1450 kW)	79.9 L	7870 KG	Unlimited
		2175 PS/ 1400 rpm (1600 kW)			6000 hrs/ year
		2562 PS/ 1500 rpm (1885 kW)			4000 hrs/ year

## MEDIUM SPEED PROPULSION ENGINES

No.	Model	Rated Output/ Speed Công suất/ Vòng quay	Annual Operating Hours Số giờ hoạt động hàng năm
1	S6U-MPTK	1350 HP/ 1060 rpm (1007 kW)	Unlimited
		1500 HP/ 1100 rpm (1119 kW)	6000 hrs/ year
		1650 HP/ 1200 rpm (1231 kW)	4000 hrs/ year
2	S8U-MPTK	1800 HP/ 1060 rpm (1343 kW)	Unlimited
		2000 HP/ 1100 rpm (1492 kW)	6000 hrs/ year
3	S12U-MPTK	2200 HP/ 1200 rpm (1641 kW)	4000 hrs/ year
		2700 HP/ 1060 rpm (2014 kW)	Unlimited
		3000 HP/ 1100 rpm (2238 kW)	6000 hrs/ year
4	S16U-MPTK	3300 HP/ 1200 rpm (2462 kW)	4000 hrs/ year
		3600 HP/ 1060 rpm (2686 kW)	Unlimited
		4000 HP/ 1100 rpm (2984 kW)	6000 hrs/ year
		4400 HP/ 1200 rpm (3282 kW)	4000 hrs/ year



Hotline: 0979 000 050